

State of Wyoming Corner Record

(In compliance with the CORNER PERPETUATION AND FILING ACT, Wyoming Statutes, 1977, Section 36-11-101, et. seq., and the Rules and Regulations of the Board of Registration for Professional Engineers and Professional Land Surveyors)

Reverse side of this form may be used if more space is needed.

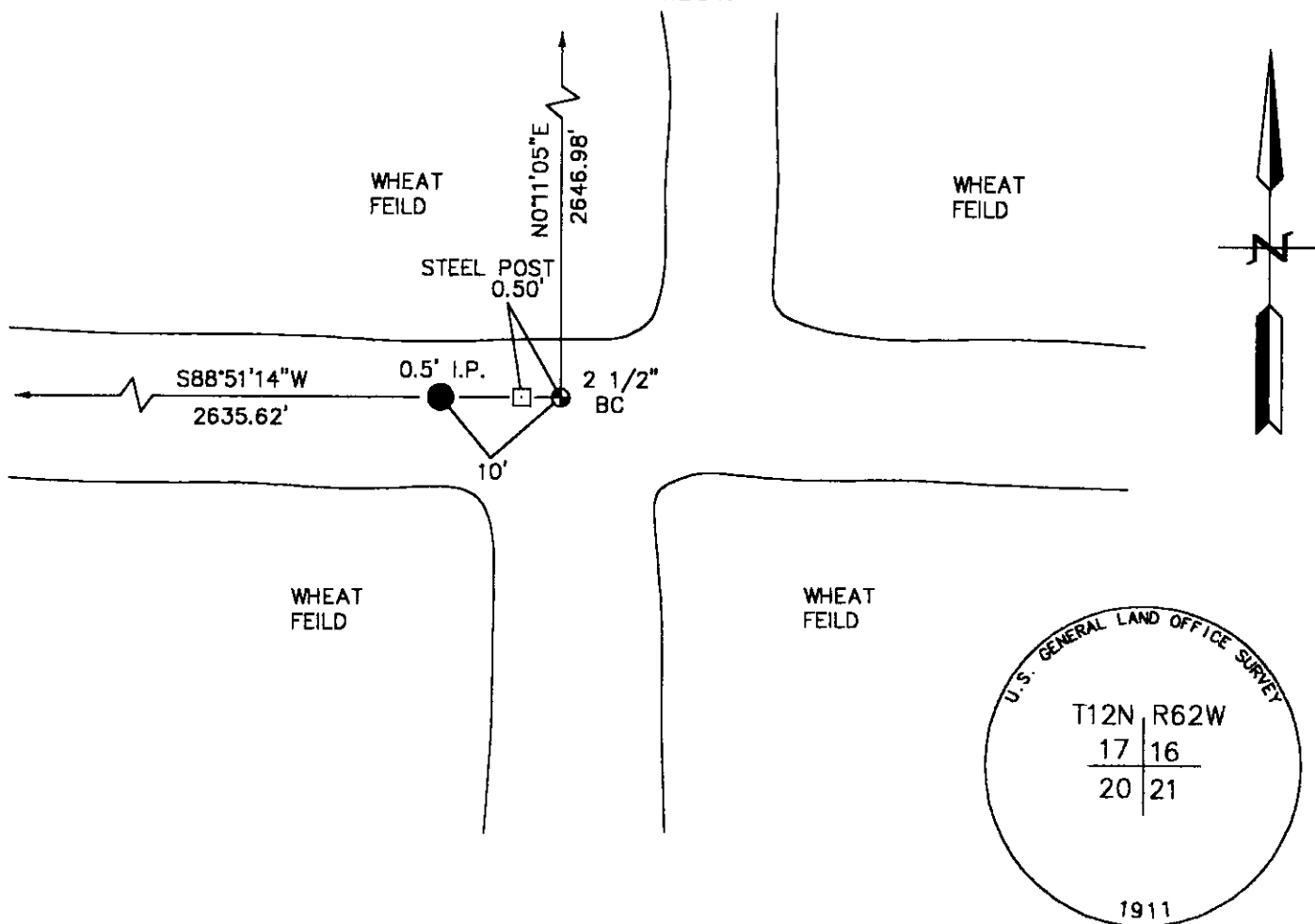
Record of original survey and citation of source of historical information (if corner is lost or obliterated). Description of corner monumentation evidence found and/or monument and accessories established to perpetuate the location of this corner. Sketch of relative location of monument, accessories, and reference points with course and distance to adjacent corner(s) (if determined in this survey). Method and rationale for reestablishment of lost or obliterated corner.

GLO RECORD: SET AN IRON POST 3' LONG, 2" IN DIAMETER, 2 1/2' IN THE GROUND, FOR CORNER TO SECTIONS 16, 17, 20, & 21, WITH A US GLO BRASS CAP.

MONUMENT FOUND: FOUND A 2 1/2" GLO BRASS CAP DOWN 0.10' BELOW GROUND. CAP STAMPED AS SHOWN BELOW.

MONUMENT SET: SET NOTHING.

REFERENCES: MONUMENT LIES BETWEEN THE PLOW LINES OF FOUR WHEAT FEILDS, WITH A STEEL FENCE POST 0.50' WEST.



Date of Field Work: 2-3-98

Office Reference: 98051

Firm/Agency, Address

STEEL SURVEYING SERVICES, LLC.

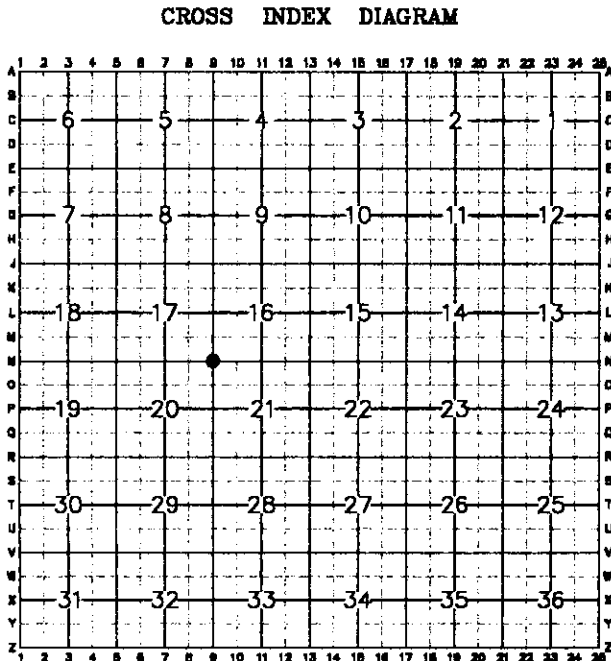
1102 WEST 19th STREET

CHEYENNE WY 82001

Telephone Number: (307) 634-7273

This corner record was prepared by me or under my direction and supervision.

SEAL & SIGNATURE



Corner Name: SE SECTION CORNER Section: 17 T. 12N R. 62W; 6th P.M. Cross-Index No.: N-9
 SBRPEPLS/PLSW: March 1994